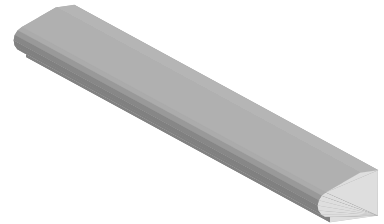
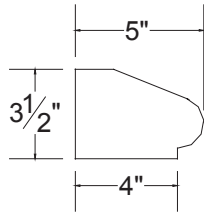


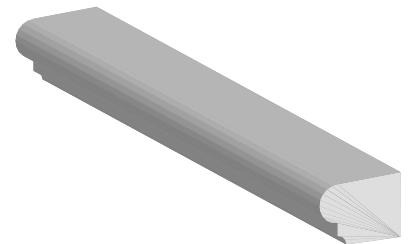
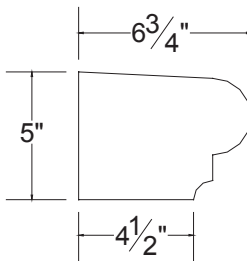


Window Sills

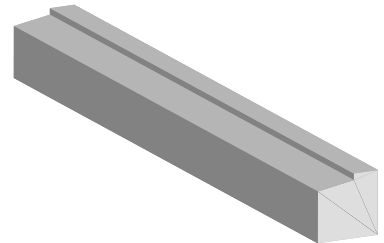
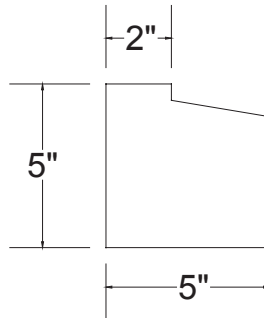
Item:	Window Sill bullnose
Part #	S1
Height:	3-1/2"
Thickness:	5"
Length:	47-5/8" cut to fit.



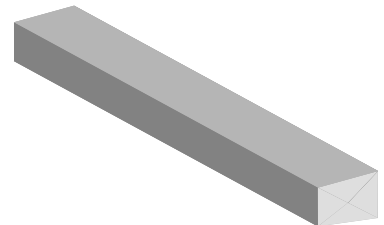
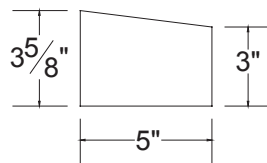
Item:	Window Sill ogee bullnose
Part #	S2
Height:	5"
Thickness:	6-3/4"
Length:	47-5/8" cut to fit.



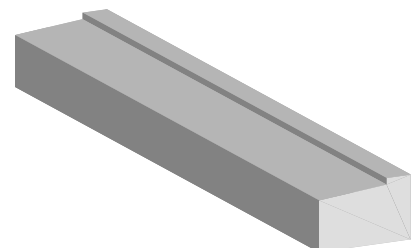
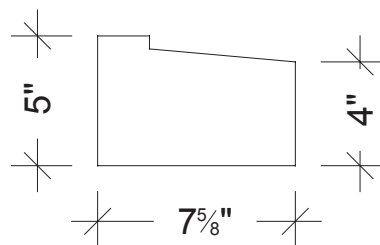
Item:	Window Sill
Part #	S3
Height:	5"
Thickness:	5"
Length:	47-5/8" cut to fit.



Item:	Window Sill
Part #	S4
Height:	3-5/8"
Thickness:	5"
Length:	47-5/8" cut to fit.



Item:	Window Sill
Part #	S5
Height:	5"
Thickness:	7-5/8"
Length:	47-5/8" cut to fit.



Call 888-521-5204 for information.