



Columns

Item:	8' Tuscan Column w/ entasis complete
Part #	CT8
Height:	17'
Diameter:	18"

Item:	8' Tuscan Column Cap
Part #	CT8C
Height:	5-7/8"
Width:	12-3/4"*

Item:	8' Tuscan Column Base
Part #	CT8B
Height:	5-1/4"
Width:	14-3/8"*

Item:	10' Tuscan Column w/ entasis complete
Part #	CT10
Height:	17'
Diameter:	18"

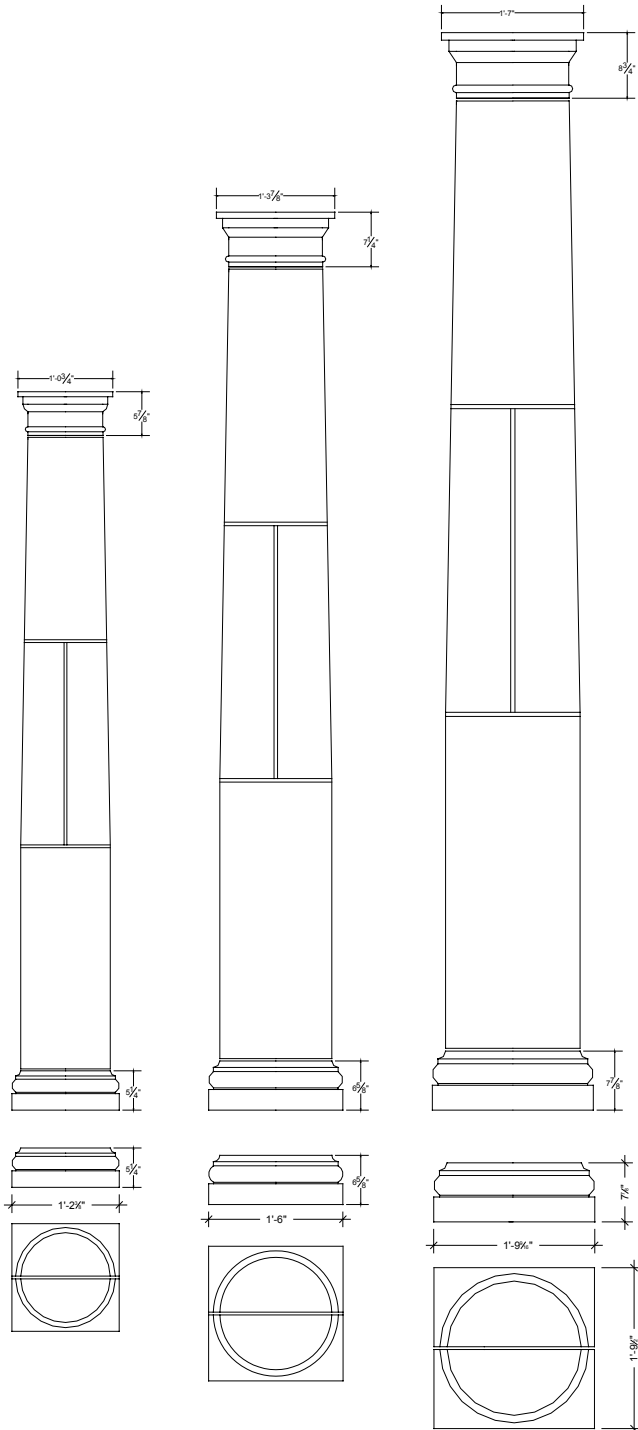
Item:	10' Tuscan Column Cap
Part #	CT10C
Height:	7-1/4"
Width:	15-7/8"*

Item:	10' Tuscan Column Base
Part #	CT10B
Height:	6-5/8"
Width:	18"*

Item:	12' Tuscan Column w/ entasis complete
Part #	CT12
Height:	12'
Diameter:	18"

Item:	12' Tuscan Column Cap
Part #	CT12C
Height:	8-3/4"
Width:	19-1/4"*

Item:	12' Tuscan Column Base
Part #	CT12B
Height:	7-7/8"
Width:	21-1/2"*



Call 888-521-5204 for information.

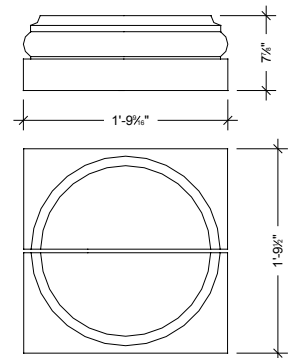
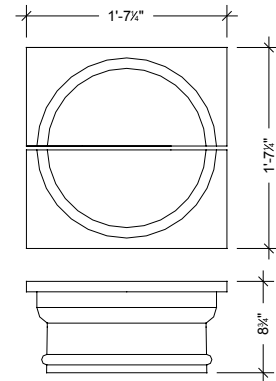
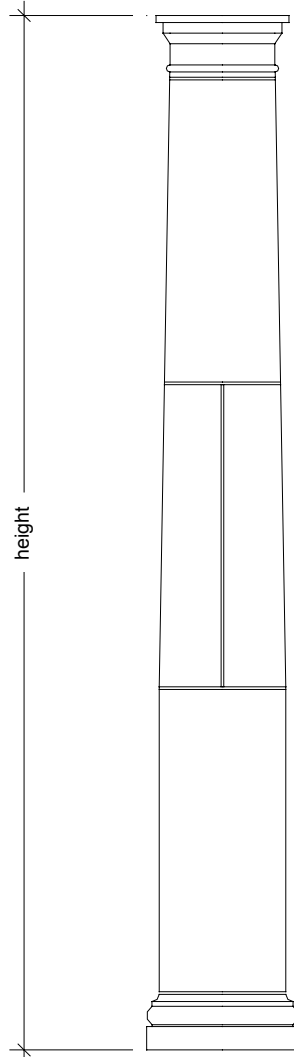


## Columns

Item:	17' Tuscan Column w/ entasis complete
Part #	CT17
Height:	17'
Diameter:	18"
Thickness:	4"

Item:	17' Tuscan Column Cap
Part #	CT17C
Height:	8-3/4"
Width:	19-1/4**

Item:	17' Tuscan Column Base
Part #	CT17B
Height:	7-7/8"
Width:	21-1/2**



### *Information.*

1. Columns are fabricated in halves and sections.
2. Pieces can be fabricated with recess middle to wrap steel column for load bearing areas.
3. Parts are manufactured with slots for strap attachment as well as holes to accept dowels.
4. Other style columns are quoted on request.
5. Some adjustment in height is possible.

Call 888-521-5204 for information.